



Midwest Prospect's Northfield

Results

1/20/2024

Luke O-Rourke

60 Yard Dash Times

7.13, 7.38

IF Velocity

-

OF Velocity

76-78

1B - Velocity

-

C - Velocity

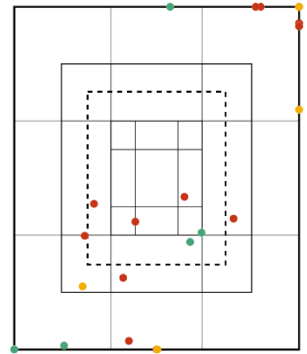
-

C- Pop Times

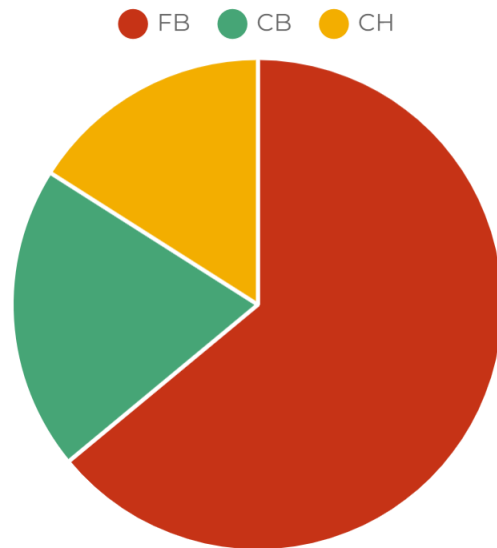
-

DATA

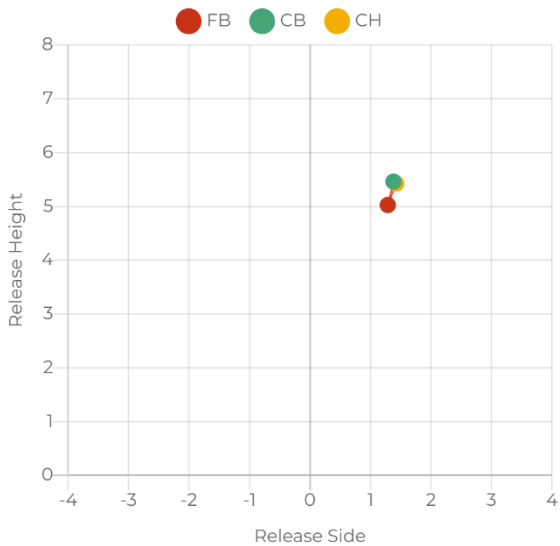
Pitch Type	Velo	Max. Velo	RPM	Max. RPM	V-Break	H-Break	Spin Eff.	Gyro Degree	Spin Dir.	Strike %	R. Angle	H. Angle	R. Height	R. Side
FB	75.8	78.6	1,810	1,964	12.6	10.5	85.8	30	01:31	20.0%	0.0	-1.7	5.0	1.3
CB	65.7	68.0	1,952	1,993	-8.2	-7.9	53.5	58	07:01	40.0%	2.2	-1.0	5.5	1.4
CH	70.0	70.7	1,676	1,767	11.6	19.9	93.3	21	01:49	0.0%	0.7	-2.6	5.4	1.4



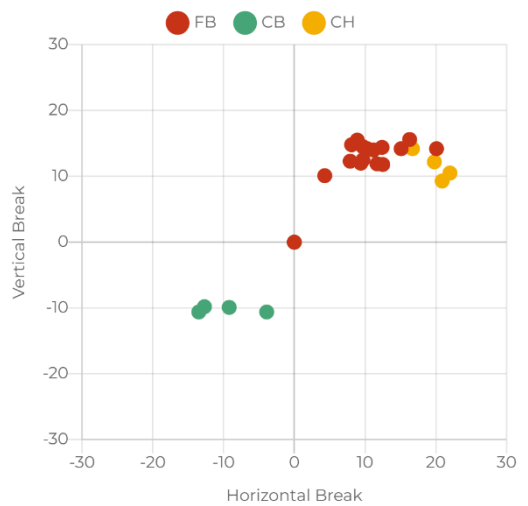
PITCH TYPE %



RELEASE AVERAGES



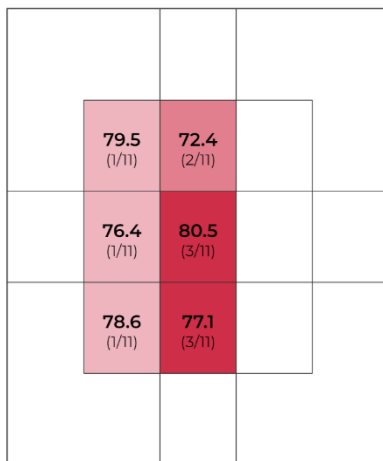
BREAK PLOT



DATA

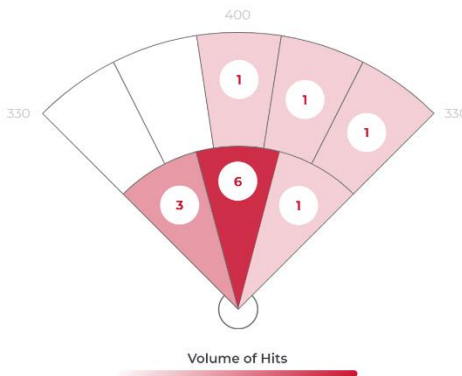
	Avg	Max	Hard Hit Avg		
Exit Velocity	74.5	84.9	79.6	Batting Avg.	0.308
Launch Angle	5.3	54.4	3.7	xwOBA	0.321
Direction	1.2°L	32°L	5.3°L	Slugging	0.308
Distance	45	245	70	Hard Hit %	69.2%
Spin Rate	1,453	2,786	1,448	Bombs %	0%
				Ropes %	15.4%

EXIT VELOCITY BY ZONE



Volume of Hits

HIT VOLUME



Zone	Pull	Middle	Oppo
Volume of Hits	3/13	8/13	2/13
Avg. LA	8.0	8.0	25.0
Avg. EV	79.0	74.0	71.0
Avg. Spin	1,477	1,409	1,593
Avg. Distance	93	85	103

HIT CLASSIFICATION

- Dribbler
- Ground Ball
- Low Line Drive
- Fly Ball
- Pop Up



HIT OUTCOMES

- Single
- Field Out

